

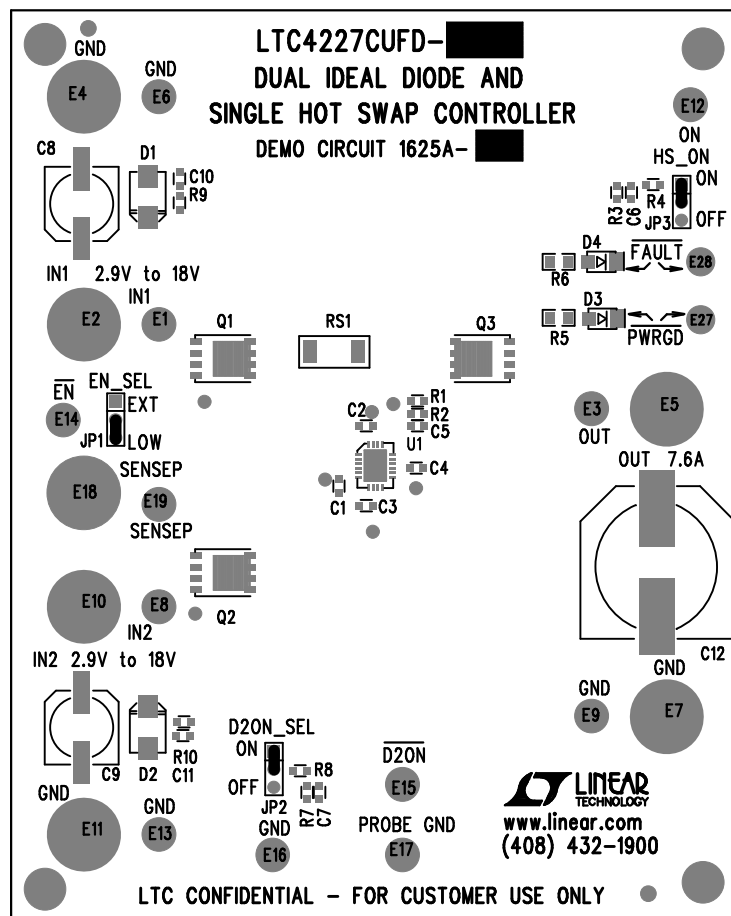
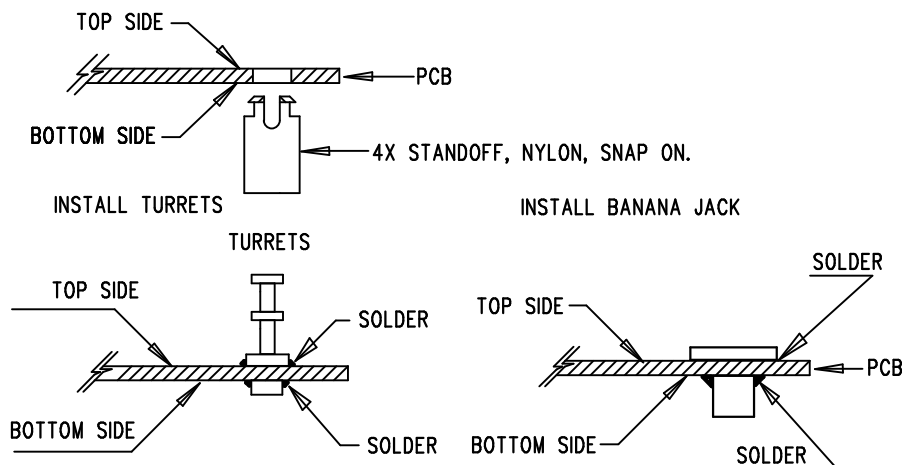
REVISION HISTORY				
ECO	REV	DESCRIPTION	APPR	DATE
-	2	PRODUCTION	VLADIMIR O.	06-10-13

NOTES: UNLESS OTHERWISE SPECIFIED

1. WORKMANSHIP SHALL BE IN ACCORDANCE WITH IPC-A-610.
2. ASSEMBLY PROCESS SHALL INCLUDE: REFLOW SOLDER TOP SIDE SMD.
3. PARTS TO OMIT WILL BE SPECIFIED ON THE BILL OF MATERIALS. LOCATIONS OF OMITTED PARTS SHALL BE FREE OF SOLDER. MASK THE SOLDER STENCIL WHERE SMT PARTS ARE OMITTED.
4. INSTALL SHUNTS AS SHOWN ON ASSY DRAWING.
5. DEPANELIZE BOARDS AFTER ASSEMBLY AND ROUTE-OUT THE BREAKOUT TABS ON FOUR SIDES OF THE BOARD EDGE.
6. DO NOT APPLY ANY KIND OF ASSEMBLY STAMP OR QA STAMP TO ANY BOARD.
7. INSTALL D3, D4 AS SHOWN BELOW:

RES.   TURRET

8. INSTALL 4 STANDOFFS AT 4 LOCATIONS AS SHOWN BELOW:



TOP SILKSCREEN

LINEAR TECHNOLOGY
DC1625A-LTC4227CUFD
DUAL IDEAL DIODE AND
SINGLE HOT SWAP CONTROLLER
DATE: 05-14-10

8. MARK EACH LTC PART NUMBER AND ASSEMBLY TYPE WITH BLACK PERMANENT MARKER AS SHOWN IN TABLE BELOW:

ASSY	U1
-A	LTC4227CUFD-1
-B	LTC4227CUFD-2
-C	LTC4227CUFD-3
-D	LTC4227CUFD-4

APPROVALS

PCB DES.	AK
APP ENG.	VLADIMIR O.



1630 MCCARTHY BLVD
MILPITAS, CA 95035
PH: (408)432-1900
www.linear.com
LTC CONFIDENTIAL -
FOR CUSTOMER USE ONLY

TITLE: TOP ASSEMBLY DRAWING
DUAL IDEAL DIODE AND
SINGLE HOT SWAP CONTROLLER

SIZE	IC NO.	LTC4227CUFD-X	REV.
N/A		DEMO CIRCUIT 1625A	2

SCALE = NONE

FILENAME: DC1625A-2.PCB

SHT 1 of 2